



Coopersale Hall School

An Exceptional Independent School in Epping
Introducing Seniors from September 2023

LOCATION

Coopersale Hall School is only two minutes from Epping High Street, and Central Line Station, making it a perfect choice for local Epping families and those from the surrounding towns and villages such as North Weald, Harlow, Abridge and Ongar. Additionally, many families travel from Woodford, Buckhurst Hill, Chigwell and Loughton.

THE OAK-TREE GROUP OF SCHOOLS

Coopersale Hall School is part of the Oak-Tree Group of Schools, which includes Braeside School in Buckhurst Hill, Normanhurst School in North Chingford and Oaklands School in Loughton. A successful group of local independent schools, all four are operated with the same aims of excellence and care, being owned and run by qualified educationalists who have much experience in the specialist world of teaching and learning. At the heart of the Oak-Tree Group is a shared structure of leadership to centrally manage areas such as education, finances, IT soft/hardware, marketing and the general business.

MANAGING CHANGE

The Oak-Tree Group has extensive experience working with senior-aged pupils, with two all-through schools already in the Group. Matthew Hagger, Claire Osborn and Moreen Barnard, the three key people behind the development of the senior department, have a wealth of senior experience on which to draw.

The Group Managing Principal, Matthew Hagger, has been involved with the development of the schools in the Group for the last 21 years and has overseen the compliance, recruitment, financial/business matters and educational development of the schools through the various teams that he has put together over the years.

The Group Education Principal, Claire Osborn, joined the Group in 2003 and spent 10 years as Headmistress of Normanhurst and 3 years as Headmistress of Braeside. She has been Group Education Principal for the last 2 years and oversees the education in the four schools.

Matthew Hagger and Claire Osborn have worked together for many years to develop the senior curricula at Normanhurst and Braeside, provide high levels of resourcing appropriate to each subject, liaise with the various exam boards, monitor the progression of the students against a range of assessments and appoint an excellent body of staff responsible for the day-to-day teaching.

Coopersale Hall's Headmistress, Moreen Barnard, was Head of School (both Juniors and Seniors) at Normanhurst School before taking up her current role in 2020. She acted as a mentor to senior students and helped track progression to enable them to achieve their full potential in their GCSEs.

03

Welcome from the
Headmistress

04

Introducing Seniors

05

Why Choose Coopersale
Hall?

07

Curriculum and Academic
Success

09

Teaching

10

Wider Curriculum

13

Pastoral Support and
Wellbeing

15

Personal Development

17

Facilities and Grounds

19

Sixth Form and Life
Beyond School

21

Entry and Admissions

23

FAQs

26

Contact Us



Welcome to Coopersale Hall School



I feel very privileged to be the Headmistress of Coopersale Hall. Our excellent resources, highly committed staff and extensive grounds enable the pupils not only to achieve but also to develop their talents and skills in the academic subjects, sports or creative arts.

We value the close working relationships we foster with our parents to ensure that our pupils become capable, caring, responsible and enthusiastic young people who have the opportunity to make a positive difference to the world.

When you visit Coopersale Hall, you will see that our children are happy and confident. They care about each other and have a excellent global awareness. We have an outstanding team of staff who are passionate about the learning and well-being of the children in our care and work together to bring out the best in them.

I am looking forward to having the opportunity to welcome you to the school, take you on a personalised tour to meet the staff and children and to be able to demonstrate what a special place Coopersale Hall School is.

Miss Moreen Barnard B.Sc.(Hons), B.Ed.

Introducing Seniors

This is an exciting time in Coopersale Hall School's history, as we begin the process of extending our provision to senior pupils. We are very proud of our origins as a prep school that is now growing upwards. Our new senior developments are designed to preserve the supportive, family atmosphere of our already successful junior department.

Year groups will remain small enough for pupils to be given a personalised education, but large enough that pupils will be suitably challenged. Our first Year 7 year group will be made up from many children moving through the school from Year 6 as well as new children joining from other local schools.

The first few years of any senior school are an exciting time, and we aim to provide our pupils with as many opportunities as possible to grow and develop into well-rounded young adults.

Our Year 7 pupils will have access to our newly installed senior facilities, dedicated teaching staff and the opportunity to be a part of an already well-established and popular school in the local area.



Why Choose Coopersale Hall?

Excellent Personal Development

At Coopersale Hall, we challenge and support our pupils to be the very best version of themselves. In addition to academic studies, we enable and encourage our pupils to develop passions for sport, art, drama and music.

Friendly and Collaborative Atmosphere

At Coopersale Hall, every pupil is valued, enabling him or her to thrive in a happy and nurturing environment. The team of staff cares about the well-being of each and every pupil and we provide extensive opportunities to build confidence in our smaller setting.

Partnership with Parents

We value our close relationship with parents and look for ways to include them on a regular basis, from formal parent/teacher consultations to informal coffee morning chats. Parents are encouraged to be involved in the life of the school and are invited to exhibitions, performances, Sports Days and our annual Prize Day celebrations.

Learning Outside the Classroom

We make the most of our location, taking learning outside the classroom for subjects such as Art, Science and Geography. In addition to our seven-acre site, we use a number of excellent local sports facilities and offer a wide range of sports throughout the school. Trips and outings form an important part of the curriculum.

Extracurricular Activities

Our already broad range of extra-curricular clubs and activities will expand and develop through the introduction of senior pupils. There are opportunities for pupils to develop new skills, participate in sports and enjoy a range of creative and musical activities both onsite and in the locality.

Preparation for Life After Coopersale Hall

Pupils already leave well prepared for life after Coopersale Hall, and our provision will be extended to include those older Year 11 pupils looking to join their new colleges and sixth forms. No matter what path they choose, Coopersale Hall School will have given them a firm foundation.

Dedicated Staff

Our dedicated teaching staff are passionate about providing the very best education for our children. As a school, we have a strong record of excellent academic achievement, and we have a robust recruiting process to ensure we always have the best teachers at Coopersale Hall. We understand how important it is for quality staff to be at the centre of the children's education.

Outstanding Pastoral Care

Parents and inspectors consistently praise the excellent relationships between staff and pupils, together with our outstanding pastoral care. As we are a relatively small school, we get to know every child. This familiarity helps us to encourage, support, develop and extend. Any concerns are readily picked up and the appropriate support given.

A Personalised Education

Our small teaching groups give pupils a more personalised experience so they can reach their individual potential and make the maximum progress possible. Without the very large year groups seen in some other schools, we are able to provide many more opportunities to stretch and challenge all pupils in order to meet their individual needs.



Curriculum and Academic Success

The senior curriculum will be as broad and enriched as we have been developing in our other senior departments within the Group.

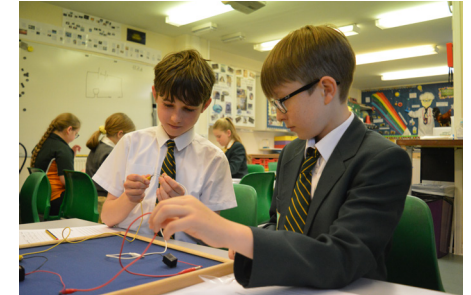
How we Deliver an Excellent Education

Enjoyment of school and school life is key to a successful education. We emphasise creative and active learning and aim to reduce unnecessary stress or pressure.

Academic success is a foundation of our expectations for all pupils to fulfil their potential. This is key for them to be able to move on to the next stage of their education after Coopersale Hall, and to be proud of their achievements.

Pupils' wellbeing has always been at the heart of our provision at Coopersale Hall. We support our pupils to become confident, tolerant and articulate young adults. We give them the tools to build their self-esteem and provide a supportive environment in which they thrive.

Preparing pupils for the future is important to us. Our pupils demonstrate a passion for learning and display the right skills to be innovative, create and to take risks, as well as to work effectively in teams, appreciate diversity and express a strong sense of who they are to find their place in the world.



Our senior model will see one class of around 20-22 students, with the capacity for sets and smaller groups in many areas.

Most senior lessons are taught by subject specialists according to set curricula and using assessments that mirror those in place for GCSEs. Many specialists are able to offer two or even three subjects.

Our senior teaching focuses on knowledge, skills, and understanding, with opportunities to develop critical thinking and problem solving skills.

The school's established SEND department is being enhanced to help those students who might require additional individual or group support.

From the start of the seniors our learning and teaching develops the knowledge, skills and understanding needed to become successful at GCSE. Pupils become familiar with the ways in which learning is assessed and they are encouraged to develop their independent learning and research skills through the curriculum.

In Year 9, pupils are asked about their GCSE options and these are timetabled to be taught post the May half-term giving pupils an excellent initial grounding in this important examination phase of their educational journey.

In Years 10 and 11, the curriculum includes several pre-determined traditional core subjects and the selection of three other subjects from the optional subject list.

GCSE Options

6 Core Subjects

- English Language
- English Literature
- Maths
- Physics
- Chemistry
- Biology

3 Option Subjects

- French
- Spanish
- History
- Geography
- Business Studies
- Computer Science
- Art
- DT
- PE
- Music
- RS

In addition there will be weekly PSHE lessons with a scheme of work that includes topics such as health, relationships, equality, changes through puberty and careers education, all designed to help prepare students for the future.

Teaching

Teachers in the Oak-Tree Group:

- Go beyond the prescribed curriculum to develop a passion for their subjects.
- Develop a love of learning in each individual student.
- Use a variety of resources and facilities to enable creative and active learning.
- Enable students to develop at their own pace with sufficient opportunities for stretch and challenge.
- Provide opportunities for innovation, creativity and risk-taking.
- Encourage research-based learning to develop independent thinking skills and presentations to improve oral skills and general confidence.
- Provide additional booster sessions for GCSE students at break times and after school.



Wider Curriculum

Coopersale Hall students have access to a huge number of sporting, academic and creative extra-curricular clubs and activities, and these are being extended for senior students with additional specialists introduced.

The Oak-Tree Group already runs a number of residential visits both in the UK or abroad for senior students, which will also be introduced into Coopersale Hall. These have included:

- Sports trip to Spain to train with the Real Madrid coaching staff at their training ground
- Languages trips to France or Spain
- Ski Trips to Italy or Austria
- History trips to the First World War Battlefields

Senior students participate in a range of sporting, academic and creative competitions within the local area, locally or nationally with other ISA Schools and with other seniors within the Group.

We give all pupils many opportunities to participate in sport, art, drama, music, charity work, school council, community events, assemblies, the Oak-Tree Award and more.

We hold regular whole school events throughout the year including musical performances, drama showcases, Prize Giving, Science Week, Sports Day, Performing Arts Showcases and the Christmas Carol Service.

Sport

Sport is an essential part of school life at Coopersale Hall School. Many facilities are located within the extensive school grounds, meaning that sports can be integrated into the school day. Our large astroturf pitch is used extensively for matches all year round and our large sports pitch is used for sports such as football, rugby, cricket, rounders and athletics.



Art and DT

In the Art and Design Technology department, pupils develop their imaginative and artistic talents working with a broad range of materials. Small class sizes mean that our pupils are able to cultivate their own unique forms of self expression in an encouraging and supportive environment.

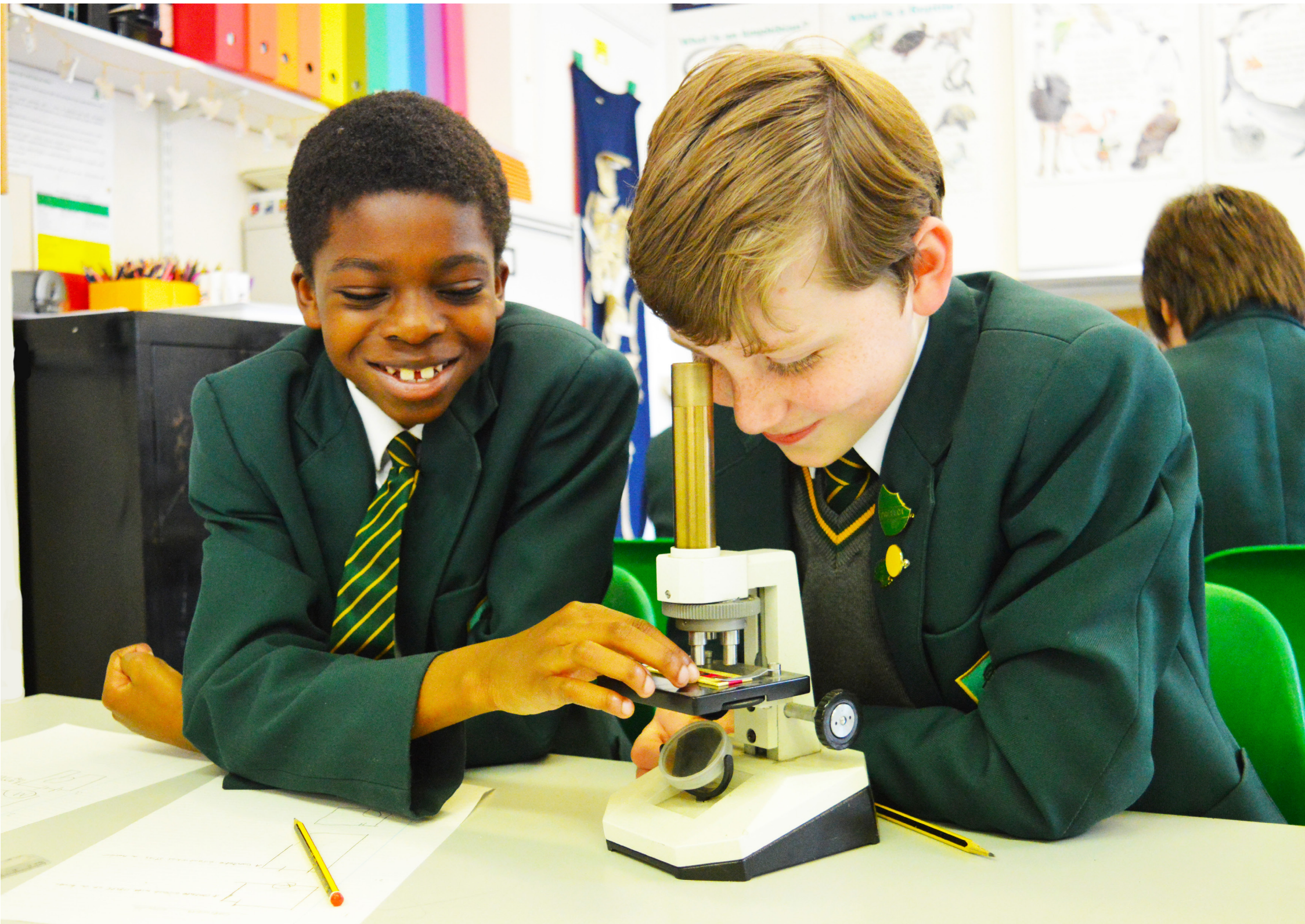
Drama

Pupils work individually, in small groups and as a whole class to develop their skills, techniques and styles. Older pupils learn about using costume, working behind the scenes and preparing for GCSE Drama if selected. We give our pupils numerous opportunities to perform in front of small and large audiences both onsite or using external local facilities.



Music

Music is taught by specialist teachers. To complement our music curriculum, a number of visiting staff offer peripatetic tuition in instruments such as piano, drums, flute, violin and saxophone. The school choir, bands and orchestras enhance many performing opportunities within and outside of school.



Pastoral Support and Wellbeing

At Coopersale Hall School, we are committed to supporting the emotional health and wellbeing for our whole school community. We recognise that everyone experiences life challenges that can make us vulnerable at times, and may need additional emotional support. Our aim as a school is to ensure that our pupils are very well supported and are able to access help when they need it.

The senior department will have the same aims, ethos and values as are already embedded at the school. We support children to become relaxed, confident, tolerant and articulate young people who are able to take responsibility for themselves. We give our students the tools to build their self-esteem, with many opportunities to improve their confidence within our smaller setting.



Our students have extensive pastoral support to help manage the pressures of senior education, GCSEs, growing up and life beyond school, including:

- Enhanced House system with staff assigned as Heads of House and a range of House activities, competitions and assemblies.
- Tutors for each year group trained to support students' welfare.
- Mental Health and Wellbeing lead, with a wellbeing 'hub' assigned for drop-ins and booked 1:1 sessions/discussions.
- Mentoring sessions with key staff to discuss academic and pastoral wellbeing.
- Staff who provide a supportive and compassionate environment and develop strong relationships based on mutual respect and trust.



Personal Development

Senior students contribute to the life of the school in many ways:

- Acting as House Captains or school prefects. The House System within the school is designed to promote positive interaction between pupils whilst fostering an atmosphere of mutual trust and respect.
- Taking assemblies and giving presentations to wider audiences.
- Representing others through participation in the various school councils. The school councils meet regularly to discuss topics of interest to the pupils and the councillors are able to make suggestions about how school life could be made even better.
- Overseeing charitable activities and encouraging others to participate. We are a generous school with a flourishing Charity Committee; pupils organise fundraising events to support local, national and international charities.
- Being reading buddies or mentors to younger pupils.

We develop our senior students' leadership skills and provide opportunities to communicate with wider audiences. We try to empower our seniors to make a difference in the world, inspiring them to go into their communities and address environmental, social and political challenges. We support our students from an early age to articulate their views and learn how to have an impact, whether individually, in a class or as part of the school as a whole.

In Years 7, 8 and 9, there will be a dedicated lesson to nurture and develop pupils' independent enquiry skills and which will provide an opportunity to work in an interdisciplinary way on research projects. The aim will be for groups, and sometimes individuals, to work independently, linking their knowledge, skills and understanding in a termly cross-curricular project.



Facilities and Grounds

An aerial photograph of Coopersale Hall school grounds. The image shows a large, multi-story school building with a red-tiled roof and a large, flat, grey-roofed terrace. The building is surrounded by lush green trees and a large lawn. In the background, there are rolling hills and a road with a roundabout. The title 'Facilities and Grounds' is overlaid in large, white, sans-serif font.

We are very lucky to have such extensive grounds at Coopersale Hall. The school benefits from sprawling lawns, a large astro turf, sports pitch, multiple play areas, a sports field and a large terrace with quiet garden.

During the summer months, the grounds are used for a range of events including the Parents' Association's Summer Fete and Sports Day for all ages. During the annual Speech Day and Prize Giving events, a large marquee is installed on the terrace lawn. Pupils use the grounds regularly in lessons, whether for outdoor learning or sporting activities.

The car park offers ample parking, with a one way system in place for safety and ease of access. Bicycle racks and electric car charging points are due to be installed in 2023.

New Facilities

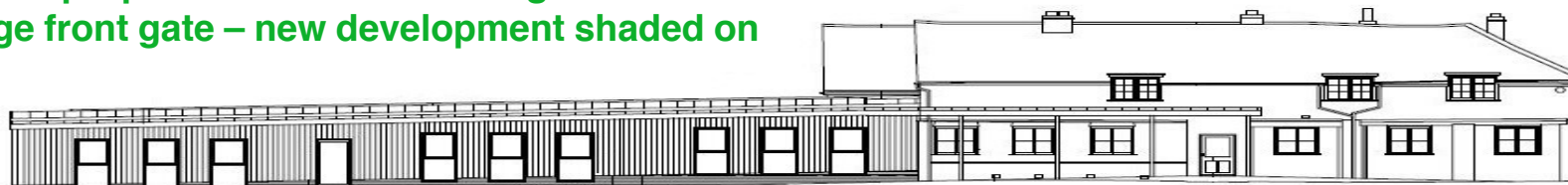
The new senior building will provide a number of additional facilities as part of a phased plan as year groups are introduced into the school, including:

- A new GCSE-appropriate Science Lab
- A new Art/DT Studio with resources room
- A new GCSE-appropriate ICT Suite
- A senior library
- 6 additional new classrooms
- Changing rooms and toilets appropriate for seniors
- Offices and support rooms

We are developing a large area adjacent to the astroturf pitches into a senior recreation/sports area.

We are used to timetabling two other schools so that seniors and juniors can co-exist harmoniously while using some of the same facilities. This will see our seniors using facilities such as the astroturf, studio and main hall/dining room in addition to the new areas being developed.

Looking at the proposed 'Senior Buildings' from the Bakers Cottage front gate – new development shaded on the left.





6th Form and Life Beyond School

Within the Group there is an excellent track record at the other senior departments of students successfully gaining sixth form places in their first choice schools and colleges - many with scholarships. Pupils are encouraged to be diligent and committed students who know the value of hard work. They are encouraged to be confident about their strengths, strive to overcome their weaknesses and to be ambitious about the future.

The vast majority choose to study locally in independent and state schools, grammar schools or colleges. Although most take A Level courses with the expectation of going on to university, some of our students choose vocational Level 3 Diploma courses which are equivalent to A Levels.

There is a known wider choice of good state schools available at sixth form, without the limiting entry criteria in place for admissions into Year 7. Even the largest state schools run smaller A Level teaching groups for more focussed attention.

In Years 10 and 11, pupils will be prepared for life beyond Coopersale Hall in a number of ways.

Mock A Level interviews with the Head and senior team.

Careers guidance, discussions and practice interviews with industry leaders built into the curriculum in Years 10 and 11.

A week's work experience in the summer term of Year 10 to give students a flavour of working in a real setting.

Aptitude tests in Year 10 that help shape future academic and career choices.



Entry

Prospective students looking to join our Seniors from outside will go through an academic selection process with the same entrance exams and interviews as we have in place at our other all-through schools to ensure that we maintain a high academic standard.

Students from Coopersale Hall moving into the Seniors will be given automatic entry into Year 7 and beyond.

Year groups will be introduced as follows:

From September 2023:	Internal and external students move into Year 7.
From September 2024:	Year 7 students move to Year 8. Internal and external Year 6 students move to Year 7.
From September 2025:	Year 8 students move to Year 9. Year 7 students move to Year 8. Internal and external Year 6 students move to Year 7, and so on.

There is clear demand for a senior department at Coopersale Hall, and we have been registering much interest since the announcement was made in March 2022 from current families and from the wider community.

Both Normanhurst and Braeside are heavily over-subscribed from Year 7 upwards and operate waiting lists for entry.



Admissions

Choosing a school for your child is one of the most important decisions you may face as parents, and at Coopersale Hall we're here to help you get it right first time around.

The admissions procedures differ depending on the age of your child. However, the process usually begins with a visit to the school, either on one of our Open Events or on a pre-arranged, personal tour.

Entry into Year 7

Entry into the Seniors from Year 7 upwards is by formal Entrance Examination, with papers in Mathematics and English.

The following procedures are applied:

- A tour of the school for the family.
- Interview for the parents with the Headmistress to explore the support available at home and any relevant connection with the School.
- Interview for the pupil with the Headmistress to explore the candidate's interests, attitude to school, personal qualities, ability to contribute to the school community.
- Entrance Examination with papers in Mathematics and English.
- Confidential report from the previous school and copies of previous school reports.

Scholarships at 11+ (Year 7)

Several part-scholarships up to a maximum 20%, may be awarded as a result of the examination and interview process. These may be awarded for ability in Art, Drama, Music and Sport as well as for higher academic ability.

Senior FAQs

When will Coopersale Hall have a full senior department?

There will be a phased introduction of senior pupils from September 2023, with the hope of having a full seniors, up to Year 11, by 2027. In 2024, Year 7 pupils will move to Year 8 and a new group of Year 7 pupils will join and so on.

What links are there between school and parents?

Parents have the opportunity each day to talk to the class teacher. We are very happy for parents to contact us to make a longer appointment if needed. The Headmistress is readily available to see parents about a variety of matters. There are also annual coffee mornings for all parents to chat with the Group Managing Principal and Headmistress about school. There are regular newsletters and the website and social media accounts are always updated with information and news.

What will the entry procedures for external pupils look like?

There will be external exams for students looking to join us into the seniors from other local schools. Pupils will go through an academic selection process with the same entrance exams and interviews as we have in place at our other all-through schools to ensure that we maintain a high academic standard.



What new facilities will be developed for the seniors?

We have planning consent to refurbish the inside of Bakers Cottage to form a new senior building, with classrooms, toilets, Science Lab/store, offices, support rooms and an ICT Suite. The large conservatory at the rear of the cottage is being demolished and a new senior block built, with classrooms and toilets/changing rooms/showers. We will also re-landscape an area to the rear of the site to create a senior recreation/seating area.

How will pupils be prepared for when they leave school at Year 11?

Pupils will be prepared in a number of ways, including taking part in mock A Level interviews with the Head and senior team, having careers guidance and discussions arranged with industry leaders, being given the opportunity to take a week long work experience placement and sitting aptitude tests in Year 10.



What experience does the Group have with working with senior pupils?

The Oak-Tree Group has extensive experience working with seniors, with two all-through schools already in the Group. Matthew Hagger, Claire Osborn and Moreen Barnard, the three key people behind the development of the senior department, have a wealth of senior experience on which to draw.

How big will classes be in the senior department?

Our senior model will see one class of around 20-22 students, with the capacity for sets and smaller groups in many areas. As pupils move through the school to GCSE lessons, Option subject classes will be smaller.





Contact Us and Learn More

When choosing a school for your child there are many factors to take into account specific to you and your child's needs. Therefore it is wise that parents get to know the school well before making the final decision. At Coopersale Hall there are many opportunities to do just this.

COME AND VISIT US

Open Days in March and October

Personal tours can be arranged at a time to suit you.

CONTACT US

TELEPHONE: 01992 577133

EMAIL: info@coopersalehallschool.co.uk

ADDRESS: Flux's Lane, Epping, Essex, CM16 7PE

See our website for all latest information including:

- Newsletters
- Headmistress's Letters
- Fees Schedules
- Entrance procedures
- Admissions policy
- Open Days
- Staff list and how to contact us
- A wide range of weekly clubs and activities
- Parents' Association events and fundraising

Follow us on Social Media



Coopersale Hall School



[coopersalehschool](https://www.instagram.com/coopersalehschool)



[CoopersaleHSch](https://twitter.com/CoopersaleHSch)



www.coopersalehallschool.co.uk

